

# 3002 INSIDER

ISSUE NO.05

MAY 2025

PRODUCED BY GUS & THE TEAM AT

*The*  
**TIPPLER**  
*& Co*



Cover: Artwork from the children at East Melbourne Child Care Co-Operative

## A MAGAZINE FOR THE 3002 COMMUNITY



# A NOTE FROM THE EDITOR

Hi everyone, I'm Gus McAllister owner of The Tippler & Co - and I'm thrilled to share our latest edition of the 3002 Insider.

This issue welcomes Nader from Revive Pharmacy as a new advertiser, and we're excited to feature our newest contributor, Joanne O'Callaghan, who's written a fantastic piece on the upcoming Fitzroy Gardens restaurant, Yiaga.



We're also lucky to have the children from East Melbourne Child Care Co-op back on the cover, capturing the beauty of our local streets with their colourful illustrations.

As always, this magazine is made special by the people who contribute to it. If you've got a story, memory, or bit of local history to share, I'd love to hear from you. The more voices we have, the stronger our little publication becomes.

Happy reading,

Gus McAllister

Owner of The Tippler & Co

## PEOPLE & PETS

Lilas, Loulou & Mimi

*The Real Bosses of the House*



Lach and I share our East Melbourne home with three beloved "children": our silver poodles Lilas (named after the French word for lilac), age 15, and Loulou, 12, along with Mimi, our regal blonde Maine Coon cat.

These days, walkies are a little slower, but still much loved. Lilas never misses a chance to step out in something stylish from her extensive wardrobe, while Loulou is always delighted to make new friends along the way. Back home, Mimi rules the roost, happily surveying her courtyard kingdom.

On cold nights, you'll find all three snuggled up in bed with us—or stretched out in front of the fire. Honestly, we can't blame them.

After nearly 40 years in East Melbourne, there's nowhere we'd rather be (well—maybe France!). This neighbourhood still feels like a little country village tucked inside a big city. East Melbourne, we love you. - Lisa

Li Zhang

*From the Ring to the Restaurant*



If you've visited Hanashi, the Japanese restaurant on Wellington Parade, chances are you've met Li Zhang—one of the trio behind the venture. What you might not know is that just two weeks before the restaurant opened, Lee was stepping out of the boxing ring after a career as a competitive fighter and coach.

The transition from boxing to hospitality might seem surprising, but for Lee, it's all about rhythm, focus and teamwork—skills he brings with him into the kitchen and onto the floor. He opened Hanashi alongside close friends Sean and Bozun, and says the fast-paced environment of restaurant life feels like a natural fit.

Lee's also incredibly grateful for the warm local support Hanashi has received since opening—including from regulars like Lisette, whose encouragement means the world.





*The Garden photo by Adele Daniele*

# YOU HAVE ALL OF THIS

*Written by Bruce Milne*

Adele Daniele is an East Melbourne resident, artist, musician, and a member of The Soft Meadow Collective, which has curated walking tours (Spontaneous Plants Dérive) in the City of Yarra. These tours explore the spontaneous plants that grow in the cracks of pavements and gutters throughout inner-city Melbourne.

Twenty years ago, Adele moved into one of the 1940s Art Deco apartments in Garden Avenue. At the time, one of the residents, artist Gary James, had transformed the old laneway behind the apartment block into an Edna Walling-inspired garden. It was ramshackle—vines and ivy wove through fences, a tangled mess of violets covered the ground, a lone tamarillo tree stood tall, and an unpredictable wisteria drenched unsuspecting residents when it rained.

Adele's mother-in-law, Dr. Rosemary Milne—a child psychologist who wrote the lyrics to the Play School theme song—also lived in the building and cherished the Walling-inspired space. Though Rosemary has passed away, Adele once had a dream of her standing in the garden with open arms, saying, “You have all of this.” Since then, Adele has embraced the space, confronting things that once scared her—spiders, insects, bugs—all of which are now part of her exploration. Every new discovery is a cause for celebration: a bird-dropping spider, the sighting of a powerful owl, or the sting of nettles—each adds to the evolving story of this transient space.



Adele has produced a zine (booklet) that documents the changing nature of the garden. It is an intimate dialogue between artist and environment. Through hand-drawn maps, photography, text, observations of biodiversity, and reflections on the shifting landscape, the zine captures the delicate relationship between human and non-human life. Once hesitant around insects and spiders, Adele now embraces them, becoming an active participant in the garden's story—she even builds spider teepees and bug-snugs to encourage them!

Adele's zine is a celebration of this hidden world.

*Zine Launch is June 8th, 5pm-7pm.*



*Rosemary Milne in our garden with Big Ted,  
Photo by Jo Grant, 2007.*

**Pre-order a copy of  
the zine here:**



**Reserve your free  
ticket here:**



## QUIRKY CORNER

While not all details can be confirmed, we encourage you to enjoy the charm and spirit of these narratives - A special thanks to Sylvia Black for the content!

### **When Grey Street Echoed with Hooves**

Though East Melbourne is now known for its leafy calm, a curious chapter from its past reveals a noisier, more pastoral reality. In the 1930s, the biggest nighttime nuisance wasn't radios or trams—it was cattle.

Each evening, drovers would herd cattle down Grey Street from the Newmarket Saleyards, en route to the Richmond abattoirs. As dusk settled over Yarra Park, the soundscape came alive: hooves clattered, stockwhips cracked, dogs barked, and above all, cattle lowed their haunting chorus through the night air.

The loudest complaints came from nearby private hospitals, where sleepless patients were stirred by the rural ruckus. Eventually, the City Council stepped in, instructing drovers to take a different path—one less disruptive to the healing process. No one's quite sure when the last herd passed through, but the tale lingers—a moody moo echoing from the city's less urban past.

Originally reported in *The Argus* (Melbourne), Friday 28 January 1938.

### **The Mace That Vanished into Vice**

In 1891, the Victorian Parliament's ceremonial mace disappeared. Rumor has it that it ended up in a Little Lon brothel, where it was used in mock parliamentary sessions. Despite investigations, the mace was never recovered, leaving behind whispers of political scandal intertwined with the city's underbelly.

*Want to know more about the history of East Melbourne then check out the East Melbourne Historical Society at [www.emhs.org.au](http://www.emhs.org.au)*



# LIFE IN 3002

Written by Janette Massa

Being the postal manager at East Melbourne Post office has been a memorable experience. East Melbourne is like no other suburb as it is its own little community and the people that come into the post office are not just customers they have become friends that I have now known for many years and have built a close and special relationship with. Not only has the Post

office been a place where the people of East Melbourne have felt they have trusted reliable and friendly team members to help them, it's also been a place where my regulars have come in on a daily basis just to say hello, to share their stories, to have a daily conversation

And a laugh. All this makes working in 3002 a special place to work at and although I have to travel over an hour each way to get to work, it is worth the travel as being part of the East Melbourne community.

I went to the Tippler on community night and it was wonderful to chat and spend time with the locals outside of work and that I knew most just because I've been working at the post office all these years and it felt like catching up with friends.

Photo L - R: Daniel, Janette, Brittney, Thomas

From there I was invited to the Moomba party which was also a wonderful night as I knew many and felt special to be included as part of the East Melbourne community, I know my customers, I know them by name, I have a connection with them and some more than others as we've known each other for years. There's the beautiful elderly residents of East Melbourne,

they come in to the post office because they trust us and need us and appreciate that we are there to support them. I've been invited to lunch, for coffees and for drinks, all in appreciation and the friendship that we've built. I go for my lunchtime walks and see my



customers and have chats with them, we ask about each others families and I get special hugs from their kids that I've seen grow.

So yes, I absolutely love working at East Melbourne Post office 3002 as it's a community full of lovely, sweet and wonderful people who I've grown to know and love and it's a beautiful feeling when I know they feel the same and agree that its not like coming into a post office but instead coming to a Place where they feel wanted and respected.





# CELEBRATING COMMUNITY AND CONNECTION

More than one hundred people from East Melbourne and surrounds gathered to bid a fond final farewell to Bishop Philip Frier and Joy Frier with a twilight picnic in Powlett Reserve. Philip and Joy spoke of their happy years at Bishopscourt and the many friends made along the way.



L - R: Kate, Joy and Shelley

We celebrated International Women's Day with a gathering at the Lyceum Club, taking time to remember the important women in our lives—especially our mothers. Cathy Wagner spoke about her career as a psychiatrist and the many ways she has supported women throughout her distinguished professional journey. At our recent morning tea, Alicia Rodriguez shared her story of moving from Argentina to Australia and building a successful career as a translator and interpreter.

## Upcoming event:

Join us for an early Mother's Day lunch on Wednesday, 8 May—everyone is welcome!



L - R: Esther, Nicole, Cathy



east melbourne group

**THE LONGEST RUNNING  
RESIDENTS' GROUP IN VICTORIA  
WITH OVER 500 MEMBERS.**

**WORKING TOGETHER TO**

- Help preserve all you love about East Melbourne and Jolimont
- Connect to the community through partnerships and events
- Add your voice and influence decision makers.



**RECEIVE**

- ✓ Regular community updates and newsletters
- ✓ Invitations to social and community events
- ✓ Opportunities to join enthusiastic people and sub-committees committed to improving life in East Melbourne and Jolimont

Annual Subscription is \$60 per person, \$120 per household and \$33 for concession card holders.

Join through [emg.org.au](http://emg.org.au) or contact Greg Bisinella, President, by emailing [president@emg.org.au](mailto:president@emg.org.au)



**FOR LEASE**



**FURNISHED OR UNFURNISHED**

**AVAILABLE SESSIONAL OR FULL TIME BASIS**

**COME INSIDE NOW FOR A TOUR, OR CONTACT:**

**0491 982 249**

**EASTBOURNE.COM.AU**



# YIAGA: A NEW CULINARY DESTINATION IN FITZROY GARDENS

*Written by* Joanne O'Callaghan

Hugh Allen, long-time executive chef of Melbourne's renowned Vue de monde, is preparing to open his first restaurant, Yiaga, in Fitzroy Gardens in late 2025.

Allen came across the Fitzroy Gardens Pavilion—a historic but long-vacant site—during Melbourne's first lockdown and was drawn to its connection to the city's past. "This place reminded me of my childhood visits to Fitzroy Gardens. It felt like the right spot to create something special," he says.

The pavilion has been vacant for a number of years, having previously operated as a café before closing when its lease expired in 2017. After initial hopes of using the space as a multi-use community venue were unsuccessful, the City of Melbourne ran a commercial expression of interest process, receiving three hospitality proposals. Vue Group has been granted a 15-year lease for the site.



Yiaga will be open from Thursday to Sunday, offering a multi-course tasting menu that highlights local seafood, wild game, and native ingredients. Beyond dining, there are plans for community engagement, with workshops, TED-style talks, and even a Sunday run club, fostering a broader sense of connection.

Designed with architect John Wardle, Yiaga will blend with its surroundings using Victorian-sourced materials. The restaurant's construction will feature burnt earth clay tiles, bricks inspired by the texture of surrounding tree bark, and ceramics crafted from the same clay used for the MCG's cricket pitch. Every design choice reflects a commitment to working with local materials and skilled craftspeople.

"It's about creating something meaningful—where people can enjoy a great meal, learn something new, and feel part of something bigger," Allen says.



# FROM NEW YORK TO MCLAREN VALE: A WINEMAKER'S TALE COMES TO THE TIPPLER

Written by Gus McAllister





This May, The Tippler is teaming up with one of Australia's most exciting winemakers—Alan Varney of Varney Wines—for a special night of shared stories, sips, and sixcourses. Think signature Tippler dishes paired with eight of Varney's finest drops from McLaren Vale and the Adelaide Hills. Alan's wines are a masterclass in purity and balance. Since launching Varney Wines in 2019, he's racked up five consecutive 5-star ratings from James Halliday and was crowned Best New Winery in 2021. His secret? An intuitive, hands-on approach that lets the fruit shine—wild ferments, no fining or filtration, and just the gentlest kiss of seasoned oak. But Alan's story doesn't begin in the vines of South Australia. It starts just outside New York City, winds through wine capitals across the globe, and finally lands at the restored 1870s limestone

barn he now calls home. From this base, he crafts four distinct ranges —wines designed to light up any table. As Halliday himself put it: "His ability to draw the varietal heart of each wine he makes is extraordinary."

So, whether you're a devoted oenophile or just up for a fun Thursday night out, this is one to mark on the calendar.



## Varney Wines at The Tippler

 Thursday 22 May | 7PM  
 The Tippler & Co, East Melbourne  
 \$129 per person  
 Six courses, eight wines



**EAST MELBOURNE  
REVIVE PHARMACY**

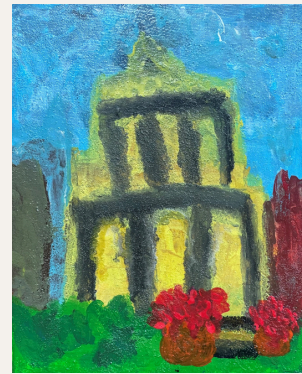
**Your One-Stop Health Care Solution**

We are privileged to serve the East Melbourne community. We strive to continue the proud legacy of Pyman's Pharmacy with our commitment to your health and well-being. Pop in to meet our pharmacist, Nader and our wonderful team

Prescription Filling, Advice and Storage  
MedAdvisor Prescription Management App  
Weekly Medication Packs (First 3 months free!)  
Blood Pressure Monitoring  
Vaccination Services:  
Free COVID & Flu Vaccines  
Shingles Vaccine (Free for 65+)  
MMR, Whooping Cough, RSV & More  
NDSS Point of Sale  
**We look forward to serving you!**



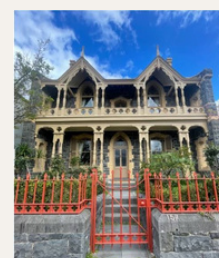
# THROUGH THE EYES OF OUR YOUNG ARTISTS



**Zadie - 12 Jolimont Terrace**



**Millie - 6 Garden Avenue**



**Hazel - 157 Hotham Street**



**Quinn - 118 Gipps Street**



Following on from a lovely artwork by the children at the East Melbourne Child Care Co-operative featured on a previous cover, this edition showcases a new series of vibrant illustrations capturing some of the suburb's most iconic homes.



**SATURDAY  
10 MAY,  
10AM TO 12PM**

## SKETCH YOUR CAKE AND EAT IT TOO! WITH ALISSA DUKE

Join artist Alissa Duke for this fun watercolour workshop where you will learn to sketch food and drink with watercolour pencils. Morning tea is provided for your sketching inspiration (or bring your own if you have special dietary requirements). All art supplies are provided. All skill levels are welcome. Bookings essential.

East Melbourne Library, 122 George Street, East Melbourne  
[melbourne.vic.gov.au/libraries](http://melbourne.vic.gov.au/libraries)



We acknowledge the Wurundjeri people of the Kulin Nation, and their Elders past and present, who are the Traditional Owners of the land this magazine is produced.



# SINCLAIR DERMATOLOGY

East Melbourne's local skin and hair specialists



At Sinclair Dermatology, we have a dedicated clinical trials team known as DIRECT (Dermatology Investigational Research Education & Clinical Trials).

With over 25 years of experience, Prof Rodney Sinclair and his team have conducted numerous trials on medications that are now available on the PBS (Pharmaceutical Benefits Scheme). Our trials focus on exploring new, potentially life-changing therapies for a wide-range of dermatological conditions.

We are proud to be at the forefront of dermatology research, leading the way in clinical care. All our studies have been approved by an ethics committee. An ethics committee ensures clinical trials are ethical and protect the rights and well-being of trial participants. Each study is conducted with the highest standards of care and safety.

We treat a variety of conditions including: eczema, psoriasis, vitiligo, hidradenitis suppurativa and alopecia areata.



## **We are excited to introduce a new clinical trial starting in 2025 for Male Pattern Baldness.**

This trial is exploring an Australian discovery for hair loss, and we are looking to treat participants who have hair thinning or baldness.

If you participate in our trial, you'll receive a potentially effective treatment free of charge for the duration of the trial. All medical fees are covered and participants receive a payment for travel and other expenses. Plus, you will be helping to shape the future of dermatological therapies.

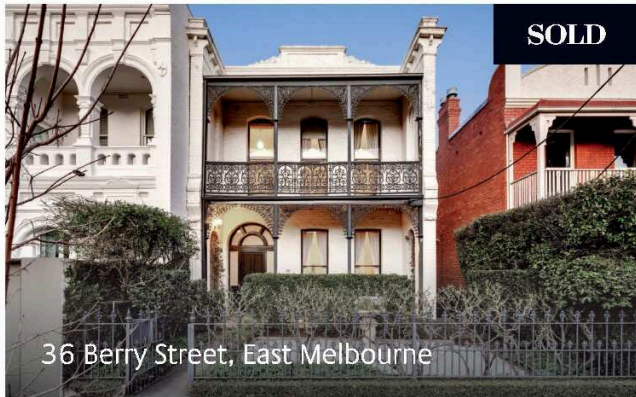
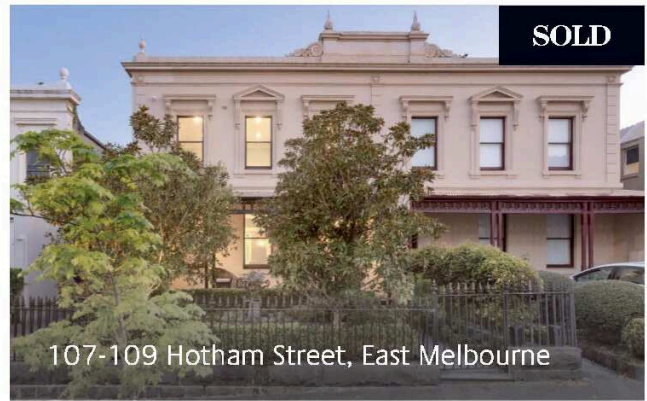


Show your interest!

If you or someone you know is experiencing noticeable hair thinning or baldness and wants to find out more or take part in one of our trials, please reach out to us today!

 Call 9013 0099 for more information or to make an appointment





## Local **East Melbourne** knowledge brings exceptional results

Peter Hannon is East Melbourne's leading agent, with an average sale price of \$5.21 million — setting the benchmark in this prestigious market. If you're considering selling in East Melbourne, contact Peter for expert guidance and trusted results.



**Peter Hannon**

Licensed Estate Agent & Auctioneer

**M** 0419 158 427

**E** [peterhannon@jellisraig.com.au](mailto:peterhannon@jellisraig.com.au)

[jellisraig.com.au](http://jellisraig.com.au)

Scan for a  
property appraisal



**Jellis  
Craig**